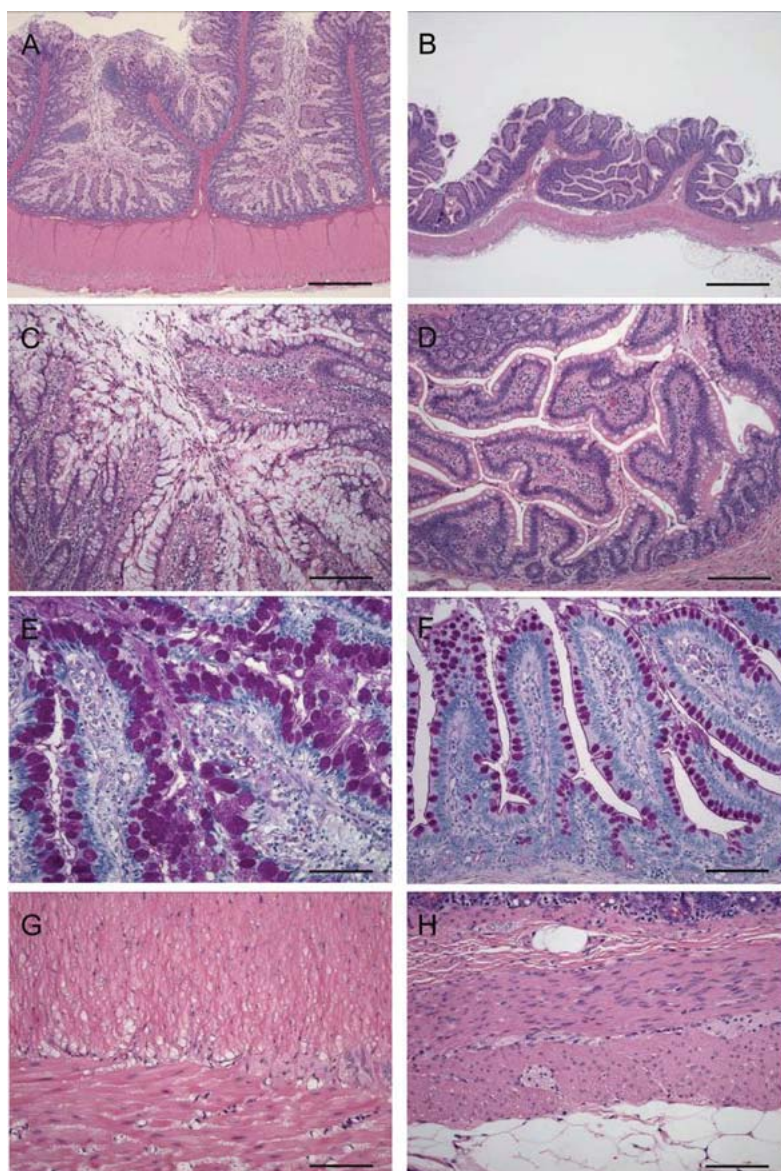




Journal of
**TOXICOLOGIC
PATHOLOGY**

<http://wwwsoc.nii.ac.jp/jstp3/english/Journal.html>



*Vol. 23
No. 2
Summer
2010*

Published by
The Japanese Society of Toxicologic Pathology

Editor-in-Chief

Dai Nakae, *Tokyo*

Editor Emeritus

Eisei Ishikawa (1988–1997)

Former Editors-in-Chief

Kunio Doi (1998–2003)

Kunitoshi Mitsumori (2003–2007)

Editorial Board (Editors)

Wijit Banlunara, <i>Bangkok</i>	John Curtis Seely, <i>North Carolina</i>
Satoshi Furukawa, <i>Saitama</i>	Makoto Shibutani, <i>Tokyo</i>
Paul-Georg Germann, <i>Barsbüttel</i>	Kazumoto Shibuya, <i>Tokyo</i>
Katsumi Imaida, <i>Kagawa</i>	Masami Suzuki, <i>Shizuoka</i>
Keisuke Izumi, <i>Tokushima</i>	James Swenberg, <i>North Carolina</i>
Hijiri Iwata, <i>Itingen</i>	Kazutoshi Tamura, <i>Shizuoka</i>
Jong-Koo Kang, <i>Cheongju</i>	Leander Tryphonas, <i>Ontario</i>
Osamu Katsuda, <i>Nara</i>	Tetsuya Tsukamoto, <i>Aichi</i>
Wolfgang Kaufmann, <i>Ludwigshafen</i>	Masahiro Tsutsumi, <i>Nara</i>
Yuji Oishi, <i>Osaka</i>	Klaus Weber, <i>Itingen</i>
Kumiko Ogawa, <i>Tokyo</i>	Midori Yoshida, <i>Tokyo</i>
Jin Ren, <i>Shanghai</i>	Naomi Yoshimi, <i>Okinawa</i>
Hiroshi Satoh, <i>Tokyo</i>	Katsuhiko Yoshizawa, <i>Osaka</i>

Description

The *Journal of Toxicologic Pathology* is an official periodical journal of the Japanese Society of Toxicologic Pathology. The Journal accepts original papers, short communications, case reports and review articles. One volume published each year is composed of four numbers. Members of the Society are entitled to receive all publications in exchange for his or her membership fee. All articles published in the Journal of Toxicologic Pathology represent the opinion(s) of the author(s) and should not be construed to reflect the opinion of the Society.

Mailing address: Dai Nakae, M.D., Ph.D., Editor-in-Chief
Editorial Office, Journal of Toxicologic Pathology
c/o Publication Center, IPEC, Inc.
1-24-12 Sugamo, Toshima, Tokyo 170-0002, Japan

Journal of Toxicologic Pathology homepage: <http://wwwsoc.nii.ac.jp/jstp3/english/Journal.html>

Free access to full papers of

Vols. 1 (1988)–10 (1997): http://www.journalarchive.jst.go.jp/japanese/jnltop_ja.php?cdjournal=tox1988

Vol. 11 (1998) or later: <http://www.jstage.jst.go.jp/browse/tox/-char/en>

Notice for photocopying

If you wish to photocopy any work of this publication, you have to get permission from the following organization to which licensing of copyright clearance is delegated by the copyright owner.

<All users except those in USA> Japan Academic Association for Copyright Clearance, Inc. (JAACC)
6-41 Akasaka 9-chome, Minato-ku, Tokyo 107-0052, Japan
Phone 81-3-3475-5618 FAX 81-3-3475-5619 E-mail: info@jaacc.jp

<Users in USA> Copyright Clearance Center, Inc., 222 Rosewood Drive, Danvers, MA 01923, USA
Phone 1-978-750-8400 FAX 1-978-646-8600

Online ISSN 1881-915X

Cover: Photomicrographs of the ileum from a monkey with the goblet cell hyperplasia and the muscular layer thickening (A, C, E, G), and that from a normal monkey (B, D, F, H). A: Marked thickening of both the mucosal and muscular layers. C: Hyperplasia of the goblet cells with extension of the villi. E: PAS-positive reaction in the mucus of hyperplastic goblet cells. G: Marked thickening of both the inner and outer muscular layers due to smooth muscle hypertrophy. B, D, F, H: Normal appearance. A, B: H&E, bar=1000 μ m. C, D: Higher magnification of A and B, H&E, bar=200 μ m. E, F: PAS, bar=100 μ m. G, H: H&E, bar=100 μ m. (See Murakami Y, et al. p. 85–89)