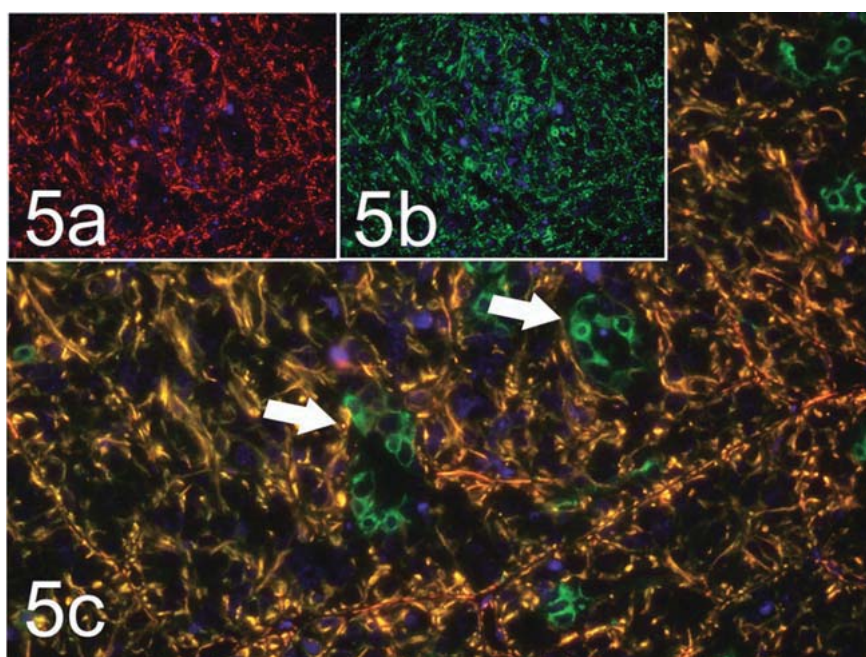




Journal of
**TOXICOLOGIC
PATHOLOGY**

<http://wwwsoc.nii.ac.jp/jstp3/english/Journal.html>



*Vol. 23
No. 4
Winter
2010*

Published by
The Japanese Society of Toxicologic Pathology

The Journal of Toxicologic Pathology has been selected for coverage in Thomson Reuters products and services. Beginning with volume 21, number 1, year 2008, the journal is indexed and abstracted in:

- ◆ Science Citation Index Expanded (also known as SciSearch®)
- ◆ Journal Citation Reports/Science Edition
- ◆ Biological Abstracts
- ◆ BIOSIS Previews

Editor-in-Chief

Dai Nakae, *Tokyo*

Editor Emeritus

Eisei Ishikawa (1988–1997)

Former Editors-in-Chief

Kunio Doi (1998–2003)

Kunitoshi Mitsumori (2003–2007)

Editorial Board (Editors)

Wijit Banlunara, *Bangkok*

Satoshi Furukawa, *Saitama*

Paul-Georg Germann, *Barsbüttel*

Katsumi Imaida, *Kagawa*

Keisuke Izumi, *Tokushima*

Hijiri Iwata, *Itingen*

Jong-Koo Kang, *Cheongju*

Osamu Katsuda, *Nara*

Wolfgang Kaufmann, *Ludwigshafen*

Yuji Oishi, *Osaka*

Kumiko Ogawa, *Tokyo*

Jin Ren, *Shanghai*

Hiroshi Satoh, *Tokyo*

John Curtis Seely, *North Carolina*

Makoto Shibutani, *Tokyo*

Kazumoto Shibuya, *Tokyo*

Masami Suzuki, *Shizuoka*

James Swenberg, *North Carolina*

Kazutoshi Tamura, *Shizuoka*

Leander Tryphonas, *Ontario*

Tetsuya Tsukamoto, *Aichi*

Masahiro Tsutsumi, *Nara*

Klaus Weber, *Itingen*

Midori Yoshida, *Tokyo*

Naomi Yoshimi, *Okinawa*

Katsuhiko Yoshizawa, *Osaka*

Description

The *Journal of Toxicologic Pathology* is an official periodical journal of the Japanese Society of Toxicologic Pathology. The journal accepts original papers, short communications, case reports and review articles. One volume published each year is composed of four numbers. Members of the Society are entitled to receive all publications in exchange for his or her membership fee. All articles published in the *Journal of Toxicologic Pathology* represent the opinion(s) of the author(s) and should not be construed to reflect the opinion of the Society.

The *Journal of Toxicologic Pathology* has been selected for coverage in Thomson Reuters products and services. Beginning with volume 21, number 1, year 2008, the journal is indexed and abstracted in:

- ◆ Science Citation Index Expanded (also known as SciSearch®)
- ◆ Journal Citation Reports/Science Edition
- ◆ Biological Abstracts
- ◆ BIOSIS Previews

Mailing address: Dai Nakae, M.D., Ph.D., Editor-in-Chief

Editorial Office, *Journal of Toxicologic Pathology*, c/o Publication Center, IPEC, Inc., 1-24-12 Sugamo, Toshima, Tokyo 170-0002, Japan

Journal of Toxicologic Pathology homepage: <http://wwwsoc.nii.ac.jp/jstp3/english/Journal.html>

Free access to full papers of

Vols.1(1988)–10(1997): http://www.journalarchive.jst.go.jp/japanese/jnltop_ja.php?cdjournal=tox1988

Vol. 11 (1998) or later: <http://www.jstage.jst.go.jp/browse/tox/-char/en>

Notice for photocopying

If you wish to photocopy any work of this publication, you have to get permission from the following organization to which licensing of copyright clearance is delegated by the copyright owner.

<All users except those in USA> Japan Academic Association for Copyright Clearance, Inc. (JAACC)
6-41 Akasaka 9-chome, Minato-ku, Tokyo 107-0052, Japan
Phone 81-3-3475-5618 FAX 81-3-3475-5619 E-mail: info@jaacc.jp

<Users in USA> Copyright Clearance Center, Inc., 222 Rosewood Drive, Danvers, MA 01923, USA
Phone 1-978-750-8400 FAX 1-978-646-8600

Online ISSN 1881-915X

Cover: Double-labeled immunofluorescence microscopy for a case of canine cutaneous clear cell adnexal carcinoma. Nuclei are colored blue with 4,6-diamino-2-phenylindole. a) Red fluorescence indicates vimentin immunostaining. b) Green fluorescence indicates pan-cytokeratin (CK) (AE1/AE3) immunostaining. c) Merge image. Yellow color indicates colocalized pan-CK and vimentin immunoreactivity. None of the tubular structures are positive just for vimentin (arrows), while most neoplastic cells were double-positive for CK and vimentin (See Sakuma A, et al. p. 265-269).