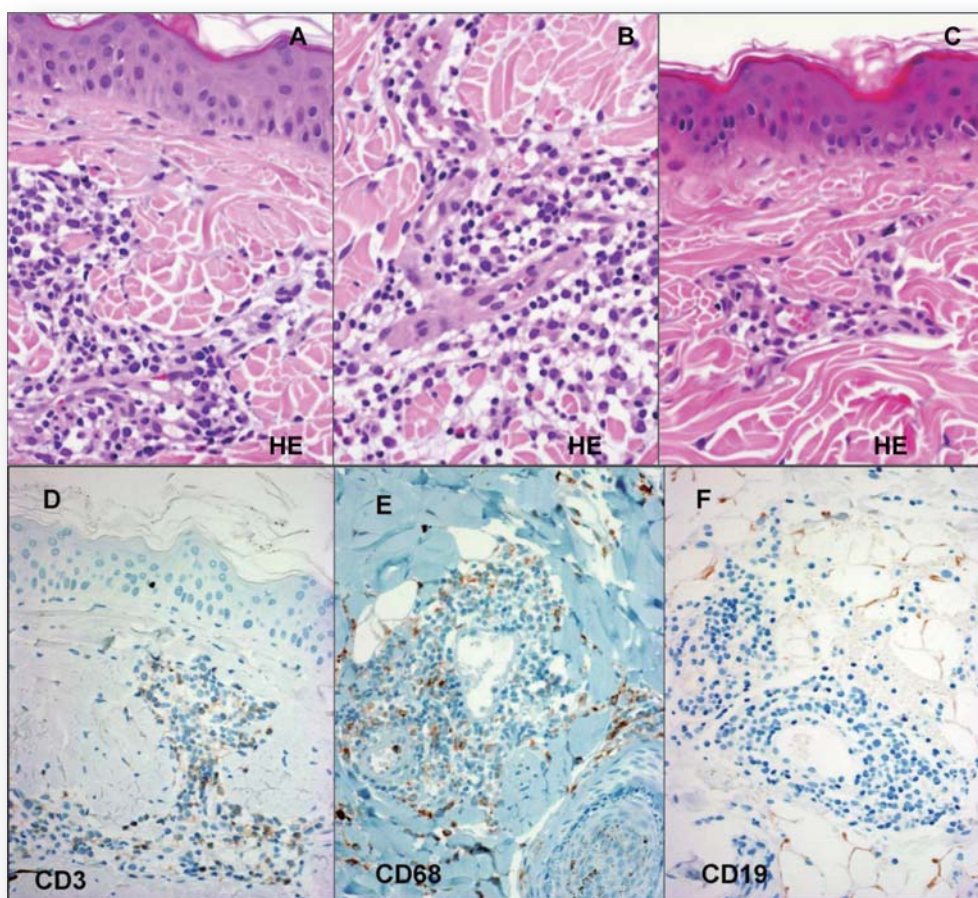




Journal of
**TOXICOLOGIC
PATHOLOGY**

<http://www.japantopath.org/en/publication/jtp/>



*Vol. 25 No. 2
Summer 2012*

Published by

The Japanese Society of Toxicologic Pathology

The Journal of Toxicologic Pathology has been selected for coverage in Thomson Reuters products and services. Beginning with volume 21, number 1, year 2008, the journal is indexed and abstracted in:

- ◆ Science Citation Index Expanded (also known as SciSearch®)
- ◆ Journal Citation Reports/Science Edition
- ◆ Biological Abstracts
- ◆ BIOSIS Previews

<i>Editor-in-Chief</i>	Dai Nakae, Tokyo
<i>Editor Emeritus</i>	Eisei Ishikawa (1988–1997)
<i>Former Editors-in-Chief</i>	Kunio Doi (1998–2003) Kunitoshi Mitsumori (2003–2007)

Editorial Board (Editors), Editors in Foreign Countries Underlined

<u>Wijit Banlunara, Bangkok</u>	<u>Robert R. Maronpot, North Carolina</u>	Masami Suzuki, Shizuoka
Satoshi Furukawa, Saitama	Hirofumi Nagai, Kanagawa	<u>James Swenberg, North Carolina</u>
<u>Paul-Georg Germann, Barsbüttel</u>	Kumiko Ogawa, Tokyo	Kazutoshi Tamura, Shizuoka
Shim-mo Hayashi, Osaka	Yuji Oishi, Osaka	<u>Leander Tryphonas, Ontario</u>
Satoru Hosokawa, Ibaraki	<u>Yoshimasa Okazaki, Itingen</u>	Tetsuya Tsukamoto, Aichi
<u>Mari Iida, Wisconsin</u>	Kiyokazu Ozaki, Osaka	Masahiro Tsutsumi, Nara
Katsumi Imaida, Kagawa	<u>Jae-Hak Park, Seoul</u>	<u>Klaus Weber, Itingen</u>
Keisuke Izumi, Tokushima	<u>Jin Ren, Shanghai</u>	<u>Jihong Yang, Yunnan</u>
<u>Hijiri Iwata, Itingen</u>	Hiroshi Satoh, Tokyo	Midori Yoshida, Tokyo
<u>Takahito Kambara, Pennsylvania</u>	<u>John Curtis Seely, North Carolina</u>	Naomi Yoshimi, Okinawa
<u>Jong-Koo Kang, Cheongju</u>	Makoto Shibutani, Tokyo	Katsuhiko Yoshizawa, Osaka
Osamu Katsuda, Nara	Kazumoto Shibuya, Tokyo	
<u>Wolfgang Kaufmann, Ludwigshafen</u>	Mariko Shirota, Kanagawa	

Description

The *Journal of Toxicologic Pathology* is an official periodical journal of the Japanese Society of Toxicologic Pathology. The journal accepts original papers, short communications, case reports and review articles. One volume published each year is composed of four numbers. Members of the Society are entitled to receive all publications in exchange for his or her membership fee. All articles published in the *Journal of Toxicologic Pathology* represent the opinion(s) of the author(s) and should not be construed to reflect the opinion of the Society.

The *Journal of Toxicologic Pathology* has been selected for coverage in Thomson Reuters products and services. Beginning with volume 21, number 1, year 2008, the journal is indexed and abstracted in:

- ◆ Science Citation Index Expanded (also known as SciSearch®)
- ◆ Journal Citation Reports/Science Edition
- ◆ Biological Abstracts
- ◆ BIOSIS Previews

Mailing address: Dai Nakae, M.D., Ph.D., Editor-in-Chief

Editorial Office, *Journal of Toxicologic Pathology*, c/o Publication Center, IPEC, Inc., 1-24-12 Sugamo, Toshima, Tokyo 170-0002, Japan

Journal of Toxicologic Pathology homepage: <http://www.japantoxpath.org/en/publication/jtp/>

Free access to full papers of

Whole issue: <https://www.jstage.jst.go.jp/browse/tox/>

Vol. 22 (2009) to present: <http://www.ncbi.nlm.nih.gov/pmc/journals/1592/>

Notice for photocopying

If you wish to photocopy any work of this publication, you have to get permission from the following organization to which licensing of copyright clearance is delegated by the copyright owner.

<All users except those in USA> Japan Academic Association for Copyright Clearance, Inc. (JAACC)
6-41 Akasaka 9-chome, Minato-ku, Tokyo 107-0052, Japan
Phone 81-3-3475-5618 FAX 81-3-3475-5619 E-mail: info@jaacc.jp

<Users in USA> Copyright Clearance Center, Inc., 222 Rosewood Drive, Danvers, MA 01923, USA
Phone 1-978-750-8400 FAX 1-978-646-8600

Online ISSN 1881-915X

Cover: DTH response (perivascular mononuclear inflammatory cell infiltrates on challenge sites; 200-fold magnification). (A) Monkey immunized twice and challenged with KLH. (B) Monkey immunized twice and challenged with tetanus vaccine. (C) Monkey immunized twice with tetanus vaccine and challenged with aluminum hydroxide. (D) Positive brown staining for T lymphocytes in a monkey immunized and challenged with KLH (CD3⁺). (E) Positive brown staining for macrophages in a monkey immunized and challenged with KLH (CD68⁺). (F) Lack of specific staining with CD19 (B lymphocytes) in the perivascular infiltrates in a monkey immunized and challenged with KLH (See C Bouchez, *et al.* p. 189–194)