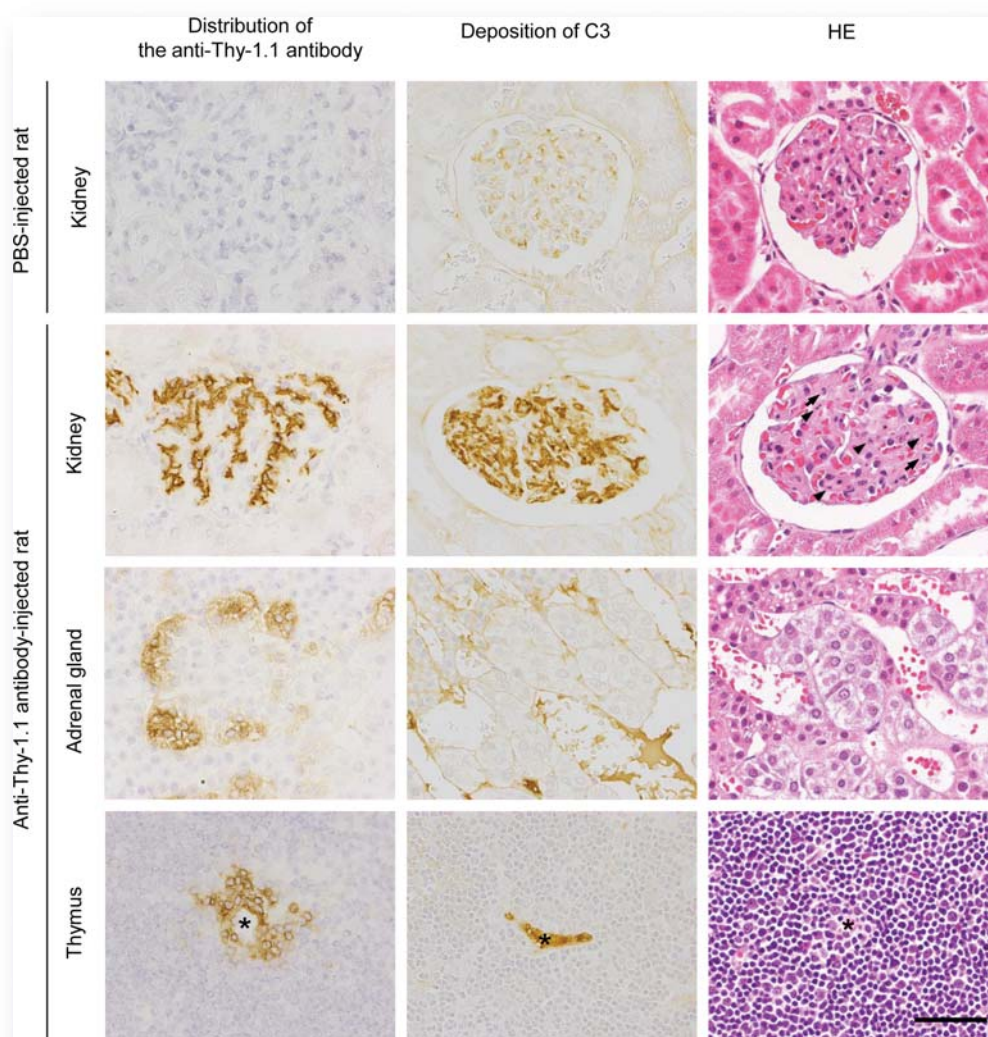




Journal of **TOXICOLOGIC PATHOLOGY**

<http://www.japantopath.org/en/publication/jtp/>



*Vol. 26
No. 1
Spring
2013*

Published by
The Japanese Society of Toxicologic Pathology

The Journal of Toxicologic Pathology has been selected for coverage in Thomson Reuters products and services. Beginning with volume 21, number 1, year 2008, the journal is indexed and abstracted in:

- ◆ Science Citation Index Expanded (also known as SciSearch®)
- ◆ Journal Citation Reports/Science Edition
- ◆ Biological Abstracts
- ◆ BIOSIS Previews

Description

The *Journal of Toxicologic Pathology* is an official periodical journal of the Japanese Society of Toxicologic Pathology. The journal accepts original papers, short communications, case reports and review articles. One volume published each year is composed of four numbers. Members of the Society are entitled to receive all publications in exchange for his or her membership fee. All articles published in the *Journal of Toxicologic Pathology* represent the opinion(s) of the author(s) and should not be construed to reflect the opinion of the Society.

The *Journal of Toxicologic Pathology* has been selected for coverage in Thomson Reuters products and services. Beginning with volume 21, number 1, year 2008, the journal is indexed and abstracted in:

- ◆ Science Citation Index Expanded (also known as SciSearch[®])
- ◆ Journal Citation Reports/Science Edition
- ◆ Biological Abstracts
- ◆ BIOSIS Previews

Mailing address: Masami Suzuki, M.D., Ph.D., Editor-in-Chief
Editorial Office, *Journal of Toxicologic Pathology*, c/o Publication Center, IPEC, Inc., 1-24-12 Sugamo, Toshima,
Tokyo 170-0002, Japan

Journal of Toxicologic Pathology homepage: <http://www.japantoxpath.org/en/publication/jtp/>

Free access to full papers of

Whole issue: <https://www.jstage.jst.go.jp/browse/tox/>

Vol. 22 (2009) to present: <http://www.ncbi.nlm.nih.gov/pmc/journals/1592/>

Notice for photocopying

If you wish to photocopy any work of this publication, you have to get permission from the following organization to which licensing of copyright clearance is delegated by the copyright owner.

<All users except those in USA> Japan Academic Association for Copyright Clearance, Inc. (JAACC)
6-41 Akasaka 9-chome, Minato-ku, Tokyo 107-0052, Japan
Phone 81-3-3475-5618 FAX 81-3-3475-5619 E-mail: info@jaacc.jp

<Users in USA> Copyright Clearance Center, Inc., 222 Rosewood Drive, Danvers, MA 01923, USA
Phone 1-978-750-8400 FAX 1-978-646-8600

Online ISSN 1881-915X

Cover: Immunohistochemical and histopathological findings in the PBS- or anti-Thy-1.1 antibody-injected rats. Immunohistochemistry for the anti-Thy-1.1 antibody and C3 and HE staining are shown. Distribution of the injected anti-Thy-1.1 antibody can be seen in the kidney, adrenal gland and thymus of the antibody-treated rat but not in the PBS-treated animal. C3 deposition in the mesangial cells of the kidney can be seen in the antibody-treated animal but cannot be seen in the PBS-treated animal. There is no positive staining in the adrenal gland or thymus of the rat injected with anti-Thy-1.1 antibody. Mesangial cell death can be seen even though cell death cannot be seen in the adrenal gland and thymus of the rat injected with anti-Thy-1.1 antibody. Karyolysis in the mesangial cell (arrowheads) and infiltrations of a small number of neutrophils (arrows) in anti-Thy-1.1 antibody-injected rat are also shown. The asterisks indicate the blood vessel in the thymus. All images are from animals at 0.5 hours after injection of PBS or the antibody. Bar = 50 μ m. (See, C Kato, et al. p. 41-49).