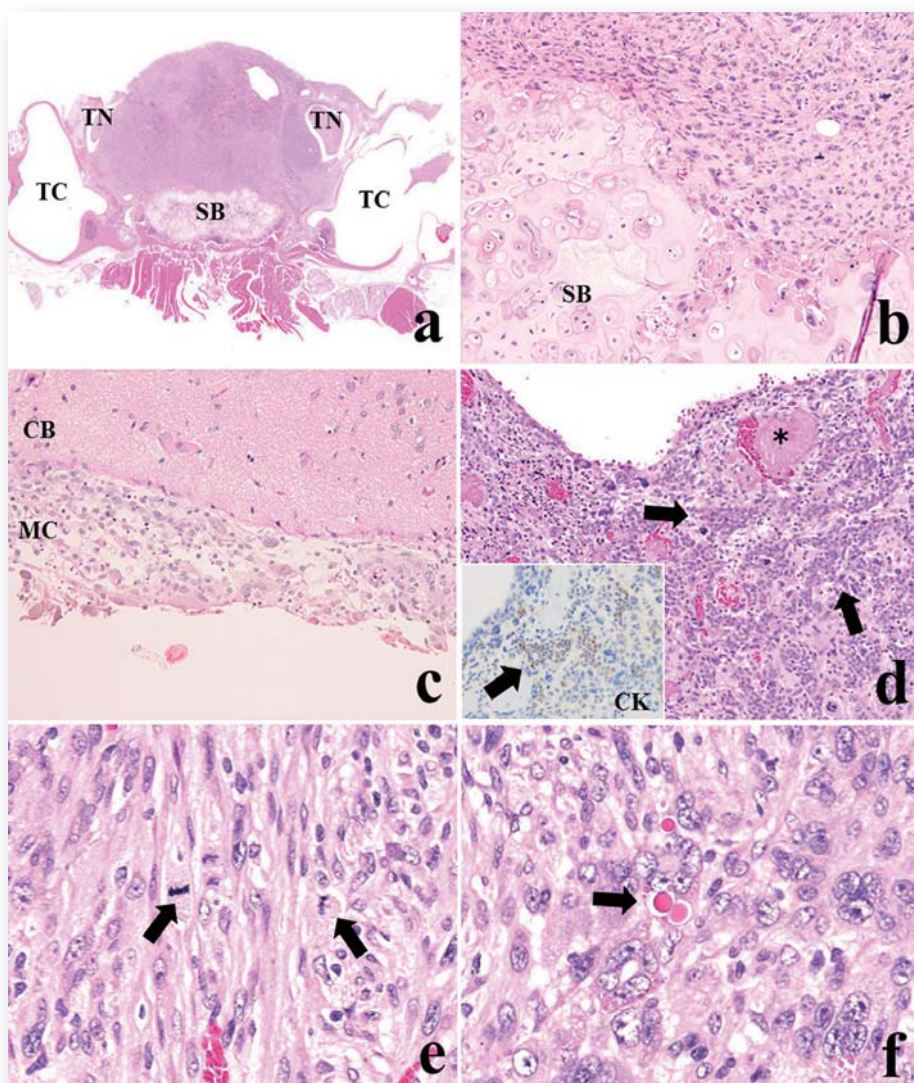




# *Journal of* **TOXICOLOGIC PATHOLOGY**

<http://www.japantoxpath.org/en/publication/jtp/>



*Vol. 28  
No. 3  
Summer  
2015*

**Published by**  
**The Japanese Society of Toxicologic Pathology**

*The Journal of Toxicologic Pathology* has been selected for coverage in Thomson Reuters products and services. Beginning with volume 21, number 1, year 2008, the journal is indexed and abstracted in:

- ◆ Science Citation Index Expanded (also known as SciSearch®)
- ◆ Journal Citation Reports/Science Edition
- ◆ Biological Abstracts
- ◆ BIOSIS Previews

### Description

The *Journal of Toxicologic Pathology* is an official periodical journal of the Japanese Society of Toxicologic Pathology. The journal accepts original papers, short communications, case reports and review articles. One volume published each year is composed of four numbers. Members of the Society are entitled to receive all publications in exchange for his or her membership fee. All articles published in the *Journal of Toxicologic Pathology* represent the opinion(s) of the author(s) and should not be construed to reflect the opinion of the Society.

The *Journal of Toxicologic Pathology* has been selected for coverage in Thomson Reuters products and services. Beginning with volume 21, number 1, year 2008, the journal is indexed and abstracted in:

- ◆ Science Citation Index Expanded (also known as SciSearch®)
- ◆ Journal Citation Reports/Science Edition
- ◆ Biological Abstracts
- ◆ BIOSIS Previews

**Mailing address:** Masami Suzuki, D.V.M., Ph.D., Editor-in-Chief  
Editorial Office, *Journal of Toxicologic Pathology*, c/o Publication Center, IPEC, Inc., 1-24-12 Sugamo, Toshima,  
Tokyo 170-0002, Japan

*Journal of Toxicologic Pathology* homepage: <http://www.japantoxpath.org/en/publication/jtp/>

Free access to full papers of

Whole issue: <https://www.jstage.jst.go.jp/browse/tox/>

Vol. 22 (2009) to present: <http://www.ncbi.nlm.nih.gov/pmc/journals/1592/>

### Notice for photocopying

If you wish to photocopy any work of this publication, you have to get permission from the following organization to which licensing of copyright clearance is delegated by the copyright owner.

<All users except those in USA> Japan Academic Association for Copyright Clearance, Inc. (JAACC)  
6-41 Akasaka 9-chome, Minato-ku, Tokyo 107-0052, Japan  
Phone 81-3-3475-5618 FAX 81-3-3475-5619 E-mail: [info@jaacc.jp](mailto:info@jaacc.jp)

<Users in USA> Copyright Clearance Center, Inc., 222 Rosewood Drive, Danvers, MA 01923, USA  
Phone 1-978-750-8400 FAX 1-978-646-8600

Online ISSN 1881-915X

---

**Cover:** (a) The mass almost replaced the pituitary gland with invasion to the sphenoid bone (SB) but did not infiltrate the trigeminal nerves (TN) and tympanic cavities (TC) ( $\times 12.5$ ). (b) Tumor cells invaded the sphenoid bone. (c) Tumor cells invaded the meninx of the cerebrum (MC) but not the parenchyma of the cerebrum (CB). (d) Small nests of native anterior cells were observed in the tumor (arrows) with congestion and thrombosis (\*) ( $\times 100$ ). Native anterior tissues were positive for CK ( $\times 200$ , inserted illustration). (e) The tumor was composed of sheets of fusiform cells with spindle- or pleomorphic-shaped nuclei and abundant eosinophilic cytoplasm. Many mitotic figures were seen in the tumor cells (arrows) ( $\times 400$ ). (f) Bizarre multinucleated giant cells with eosinophilic hyaline droplets were observed (arrow) ( $\times 400$ ). H&E staining. (See T Moroki, *et al.* p 171–176)