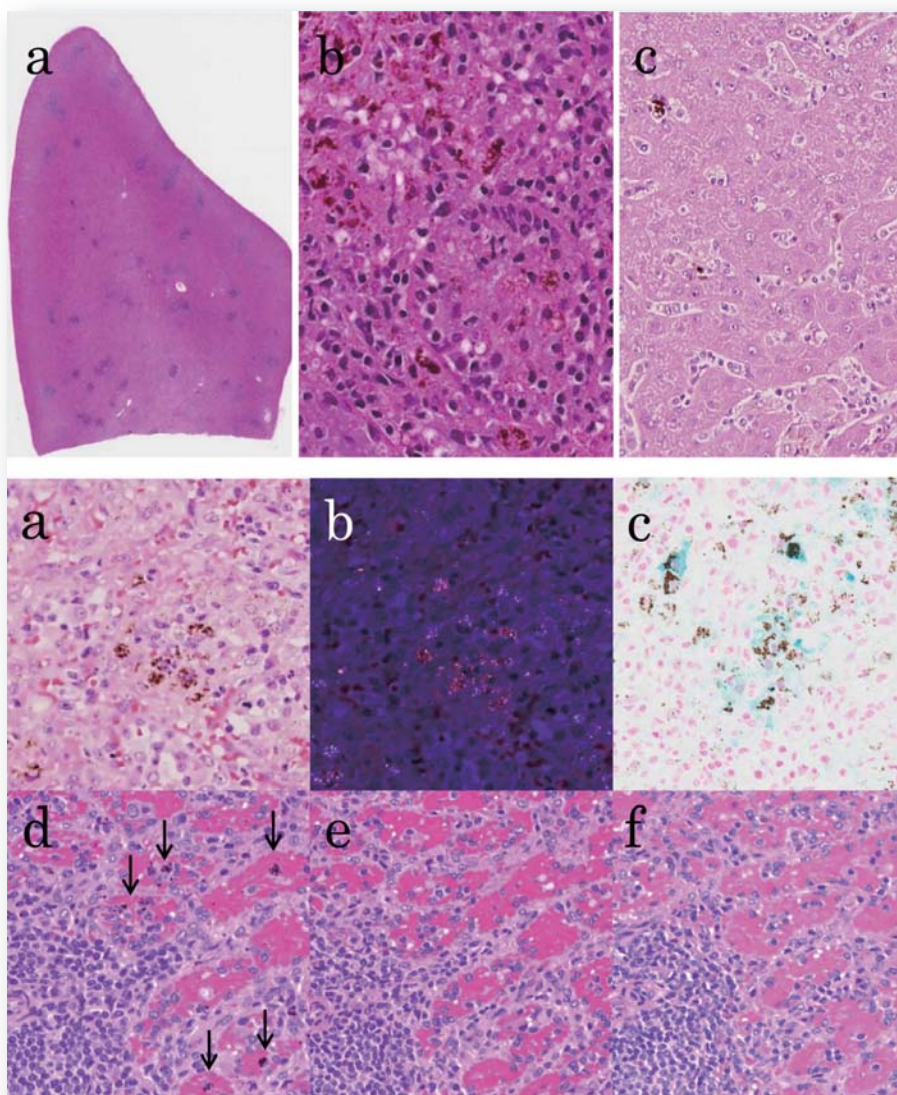




Journal of **TOXICOLOGIC PATHOLOGY**

<http://www.japantopath.org/en/publication/jtp/>



*Vol. 29
No. 1
Winter
2016*

Published by
The Japanese Society of Toxicologic Pathology

The Journal of Toxicologic Pathology has been selected for coverage in Thomson Reuters products and services. Beginning with volume 21, number 1, year 2008, the journal is indexed and abstracted in:

- ◆ Science Citation Index Expanded (also known as SciSearch®)
- ◆ Journal Citation Reports/Science Edition
- ◆ Biological Abstracts
- ◆ BIOSIS Previews

Description

The *Journal of Toxicologic Pathology* is an official periodical journal of the Japanese Society of Toxicologic Pathology. The journal accepts original papers, short communications, case reports and review articles. One volume published each year is composed of four numbers. Members of the Society are entitled to receive all publications in exchange for his or her membership fee. All articles published in the *Journal of Toxicologic Pathology* represent the opinion(s) of the author(s) and should not be construed to reflect the opinion of the Society.

The *Journal of Toxicologic Pathology* has been selected for coverage in Thomson Reuters products and services. Beginning with volume 21, number 1, year 2008, the journal is indexed and abstracted in:

- ◆ Science Citation Index Expanded (also known as SciSearch®)
- ◆ Journal Citation Reports/Science Edition
- ◆ Biological Abstracts
- ◆ BIOSIS Previews

Mailing address: Masami Suzuki, D.V.M., Ph.D., Editor-in-Chief
Editorial Office, *Journal of Toxicologic Pathology*, c/o Publication Center, IPEC, Inc., 1-24-12 Sugamo, Toshima,
Tokyo 170-0002, Japan

Journal of Toxicologic Pathology homepage: <http://www.japantoxpath.org/en/publication/jtp/>

Free access to full papers of

Whole issue: <https://www.jstage.jst.go.jp/browse/tox/>

Vol. 22 (2009) to present: <http://www.ncbi.nlm.nih.gov/pmc/journals/1592/>

Notice for photocopying

If you wish to photocopy any work of this publication, you have to get permission from the following organization to which licensing of copyright clearance is delegated by the copyright owner.

<All users except those in USA> Japan Academic Association for Copyright Clearance, Inc. (JAACC)
6-41 Akasaka 9-chome, Minato-ku, Tokyo 107-0052, Japan
Phone 81-3-3475-5618 FAX 81-3-3475-5619 E-mail: info@jaacc.jp

<Users in USA> Copyright Clearance Center, Inc., 222 Rosewood Drive, Danvers, MA 01923, USA
Phone 1-978-750-8400 FAX 1-978-646-8600

Online ISSN 1881-915X

Cover: Upper: Histopathology of the spleen (a and b) and liver (c) of a monkey with symptomatic malaria. In the enlarged spleen, massive accumulation of macrophages in the red pulp and lymphoid depletion considered related to the poor physical condition in the animal were present (a). The macrophages in the red pulp contained blackish brown pigments (hemozoin [malaria pigment]) (b). Hemozoin pigments were also observed in the hypertrophic Kupffer cells in the liver (c). H&E stain.

Lower: Characteristics of hemozoin pigments in the spleen. The pigments were clusters of blackish brown granules under normal light (a). The same section and area as in a. The granules showed brilliant birefringent under polarized light (b). The hemozoin pigment was negative for iron staining and was observed along with Berlin blue-positive hemosiderin (c). It was depigmented by 3% aqueous ammonia in 70% alcohol (Kardasewitsch method) or 5% HCL in 95% alcohol (e and f). The same areas as in e and f without any digestion (d). Arrows = hemozoin. H&E stain (a, b, d-f) and Berlin blue stain (c). (See Etsuko Ohta, *et al.* p 31-38)