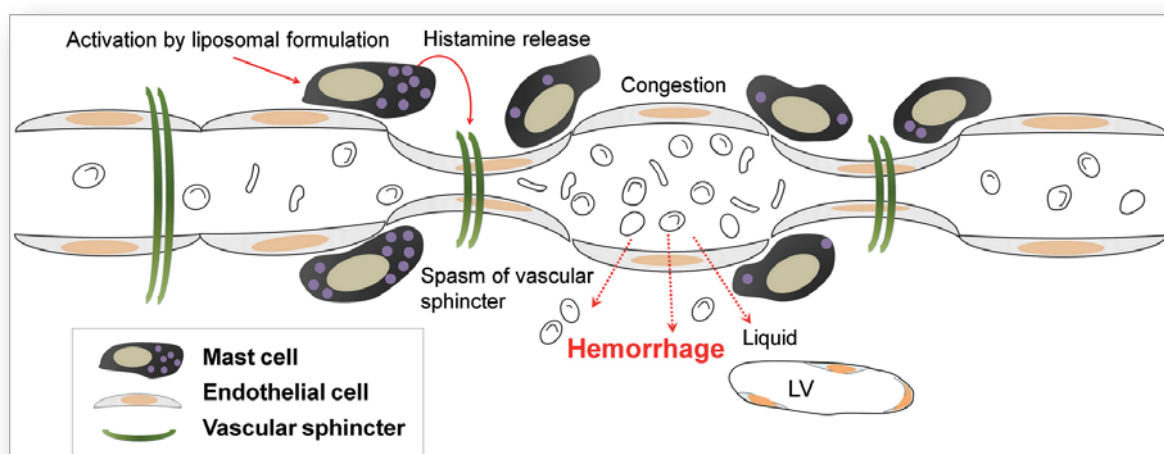




Journal of **TOXICOLOGIC PATHOLOGY**

<http://www.japantopath.org/en/publication/jtp/>



Vol. 33 No. 1
Winter 2020

Published by
The Japanese Society of Toxicologic Pathology

The Journal of Toxicologic Pathology has been selected for coverage in Thomson Reuters products and services. Beginning with volume 21, number 1, year 2008, the journal is indexed and abstracted in:

- ◆ Science Citation Index Expanded (also known as SciSearch®)
- ◆ Journal Citation Reports/Science Edition
- ◆ Biological Abstracts
- ◆ BIOSIS Previews

Description

The *Journal of Toxicologic Pathology* is an official periodical journal of the Japanese Society of Toxicologic Pathology. The journal accepts original papers, short communications, case reports and review articles. One volume published each year is composed of four numbers. Members of the Society are entitled to receive all publications in exchange for his or her membership fee. All articles published in the *Journal of Toxicologic Pathology* represent the opinion(s) of the author(s) and should not be construed to reflect the opinion of the Society.

The *Journal of Toxicologic Pathology* has been selected for coverage in Thomson Reuters products and services. Beginning with volume 21, number 1, year 2008, the journal is indexed and abstracted in:

- ◆ Science Citation Index Expanded (also known as SciSearch[®])
- ◆ Journal Citation Reports/Science Edition
- ◆ Biological Abstracts
- ◆ BIOSIS Previews

Mailing address: Satoshi Furukawa, D.V.M., Ph.D., Editor-in-Chief
Editorial Office, *Journal of Toxicologic Pathology*, c/o Publication Center, IPEC, Inc., 1-24-12 Sugamo, Toshima,
Tokyo 170-0002, Japan

Journal of Toxicologic Pathology homepage: <http://www.japantoxpath.org/en/publication/jtp/>

Free access to full papers of

Whole issue: <https://www.jstage.jst.go.jp/browse/tox/>

Vol. 22 (2009) to present: <http://www.ncbi.nlm.nih.gov/pmc/journals/1592/>

Notice for photocopying

If you wish to photocopy any work of this publication, you have to get permission from the following organization to which licensing of copyright clearance is delegated by the copyright owner.

<All users except those in USA> Japan Academic Association for Copyright Clearance, Inc. (JAACC)
6-41 Akasaka 9-chome, Minato-ku, Tokyo 107-0052, Japan
Phone 81-3-3475-5618 FAX 81-3-3475-5619 E-mail: info@jaacc.jp

<Users in USA> Copyright Clearance Center, Inc., 222 Rosewood Drive, Danvers, MA 01923, USA
Phone 1-978-750-8400 FAX 1-978-646-8600

Online ISSN 1881-915X

Cover: Although various changes caused by liposomal formulations via complement activation are known as C activation-related pseudoallergy (CARPA), the mechanisms of the dog-specific hemorrhagic changes in the liver and gall bladder have not been elucidated. The authors of the article have postulated the etiology based on pathology examinations. 1. Liposomes in the formulation activate complements. 2. Mast cells located beneath the endothelium of the hepatic veins are activated by C3a, a cleavage product produced by complement activation, and release histamine. 3. Histamine causes spasms of the vascular sphincter that is periodically located along the hepatic veins, and results in congestion. 4. Histamine also increases permeability of the blood vessel. 5. Increases in blood pressure and blood vessel permeability lead to internal space fluid accumulation and hemorrhage. 6. Hemorrhage is accompanied by dilation of the lymphatic vessels (shown as LV). (See K Makita-Suzuki, *et al.* p 1–9)