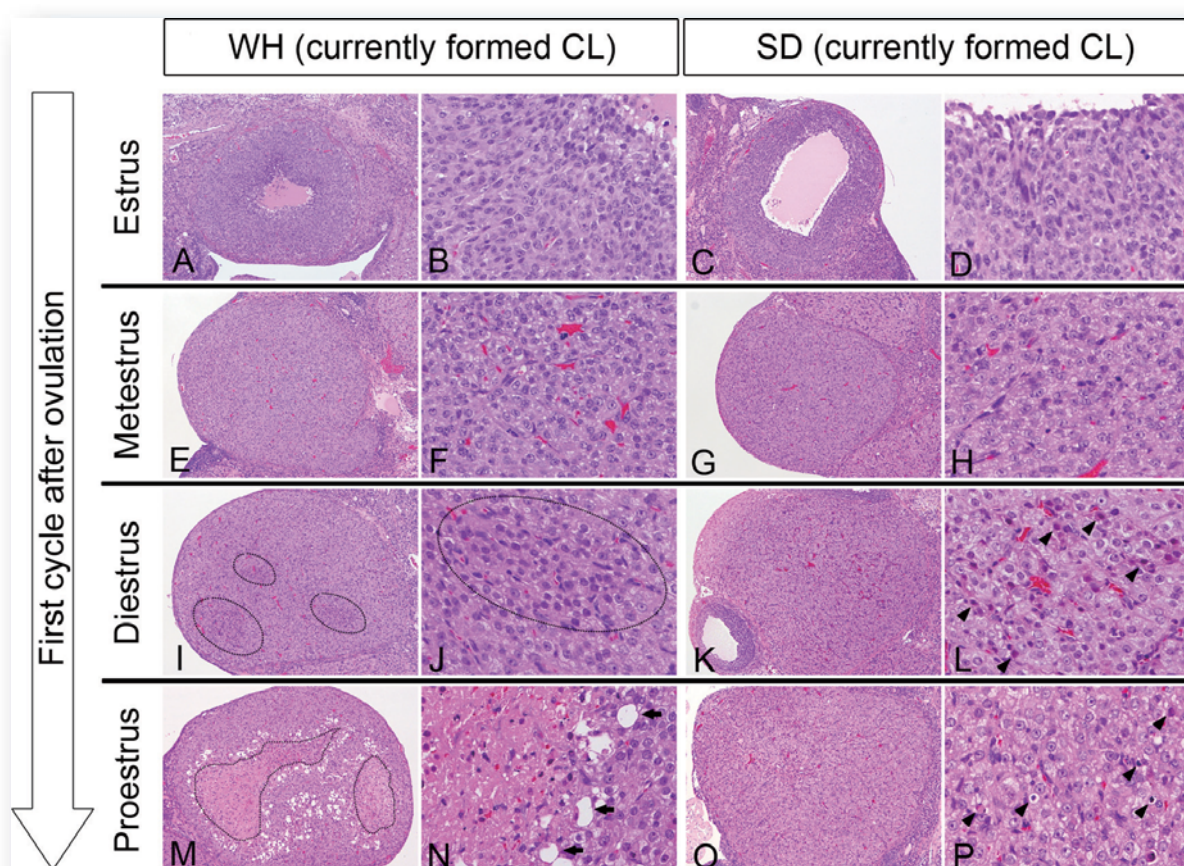




# *Journal of* **TOXICOLOGIC PATHOLOGY**

<http://www.japantopath.org/en/publication/jtp/>



*Vol. 27 No. 2*  
*Summer 2014*

**Published by**  
**The Japanese Society of Toxicologic Pathology**

The Journal of Toxicologic Pathology has been selected for coverage in Thomson Reuters products and services. Beginning with volume 21, number 1, year 2008, the journal is indexed and abstracted in:

- ◆ Science Citation Index Expanded (also known as SciSearch®)
- ◆ Journal Citation Reports/Science Edition
- ◆ Biological Abstracts
- ◆ BIOSIS Previews

### Description

The *Journal of Toxicologic Pathology* is an official periodical journal of the Japanese Society of Toxicologic Pathology. The journal accepts original papers, short communications, case reports and review articles. One volume published each year is composed of four numbers. Members of the Society are entitled to receive all publications in exchange for his or her membership fee. All articles published in the *Journal of Toxicologic Pathology* represent the opinion(s) of the author(s) and should not be construed to reflect the opinion of the Society.

The *Journal of Toxicologic Pathology* has been selected for coverage in Thomson Reuters products and services. Beginning with volume 21, number 1, year 2008, the journal is indexed and abstracted in:

- ◆ Science Citation Index Expanded (also known as SciSearch®)
- ◆ Journal Citation Reports/Science Edition
- ◆ Biological Abstracts
- ◆ BIOSIS Previews

**Mailing address:** Masami Suzuki, D.V.M., Ph.D., Editor-in-Chief  
Editorial Office, *Journal of Toxicologic Pathology*, c/o Publication Center, IPEC, Inc., 1-24-12 Sugamo, Toshima,  
Tokyo 170-0002, Japan

*Journal of Toxicologic Pathology* homepage: <http://www.japantoxpath.org/en/publication/jtp/>

Free access to full papers of

Whole issue: <https://www.jstage.jst.go.jp/browse/tox/>

Vol. 22 (2009) to present: <http://www.ncbi.nlm.nih.gov/pmc/journals/1592/>

### Notice for photocopying

If you wish to photocopy any work of this publication, you have to get permission from the following organization to which licensing of copyright clearance is delegated by the copyright owner.

<All users except those in USA> Japan Academic Association for Copyright Clearance, Inc. (JAACC)  
6-41 Akasaka 9-chome, Minato-ku, Tokyo 107-0052, Japan  
Phone 81-3-3475-5618 FAX 81-3-3475-5619 E-mail: [info@jaacc.jp](mailto:info@jaacc.jp)

<Users in USA> Copyright Clearance Center, Inc., 222 Rosewood Drive, Danvers, MA 01923, USA  
Phone 1-978-750-8400 FAX 1-978-646-8600

Online ISSN 1881-915X

---

**Cover:** Currently formed CLs in each estrous cycle at the first cycle after ovulation of WH rats and SD rats. No marked differences were noted in estrus or metestrus between WH (A, B, E, F) and SD (C, D, G, H) rats. Currently formed CLs in diestrus showed large sizes in WH (I) and SD (K) rats. There was a massive distribution of the degenerated or necrotic luteal cells in WH rats (I, J, M, N, circles) and a scattered distribution in SD rats (K, L, O, P) in diestrus and proestrus. Massive coagulative necrosis in the center of the CL in WH rats (N). Arrows show degenerating luteal cells with large vacuoles in WH rats, and arrowheads show single-cell necrosis/degeneration in SD rats. HE staining. A, C, E, G, I, K, M, O;  $\times 40$ . B, D, F, H, J, L, N, P;  $\times 300$ . (See J Sato, *et al.* p. 107–113)